

Sanitary Diaphragm Seal

SEALEVOIDF



Sanitary Heavy Duty Diaphragm Seal

Applications:

- Diaphragm seals are designed to isolate the sensing element of pressure gauges and pressure switches from process fluids that may be corrosive, viscous, containing sediment and/or with high temperatures.
- The diaphragm is welded to the upper body, to ensure separation of filling fluid from the process medium.
- Designed with food and pharmaceutical standards to permit easy removal from the plant whilst maintains the hygienic feature during frequent cleaning.

Special features (Standard Version)

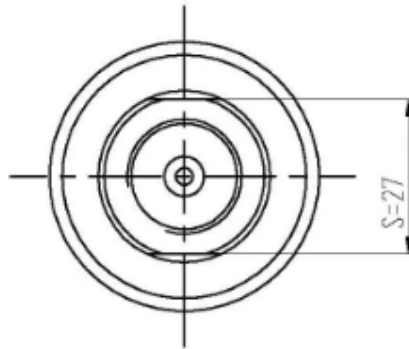
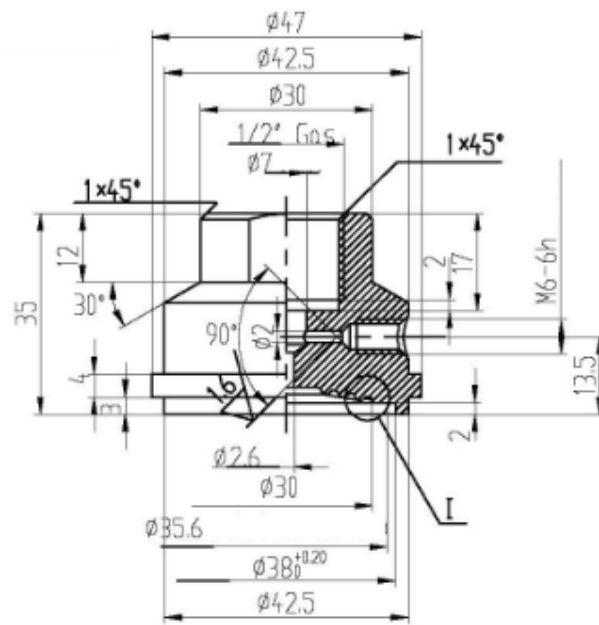
- All AISI 316 SS construction
- Threaded Process Connection IDF/ISS
- Union Nut AISI 304 st st
- Available in 1 ½" and 2" sizes

Specifications (Standard Version):

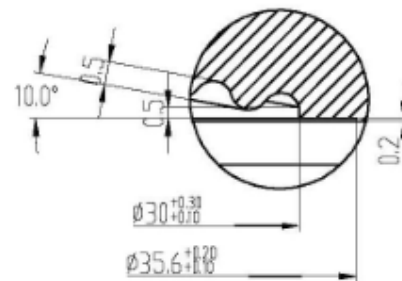
Working Pressure	From 30 PSI to 600 PSI
Process Temperature	-20°C to 120°C
Accuracy	0.5%
Instrument Connection Material	AISI 316 SS
Diaphragm Material	AISI 316L SS
Filling Liquid	Oil (FDA) for food industry
Process Connection Material	AISI 316 SS
Union Nut Material	AISI 304 SS
Instrument Connection	1/2" BSP (Female)

Minimum Ranges

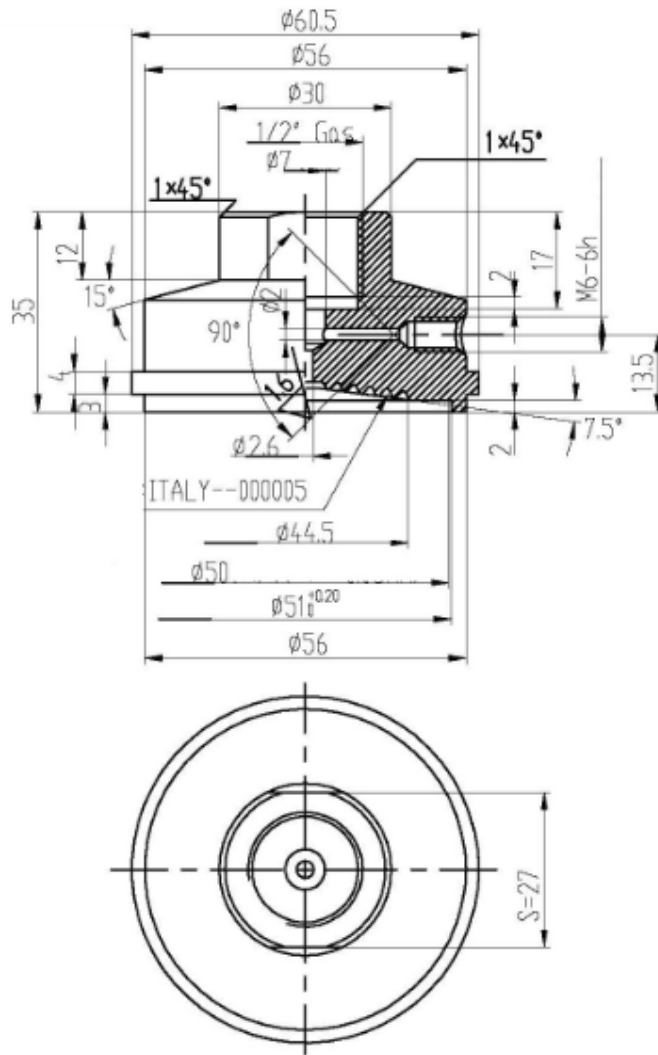
Size of Seal	Dial Size
1 ½" IDF/ISS	100mm 0-60 psi/bar
1 ½" IDF/ISS	150mm 0-100 psi/bar
2" IDF/ISS	100mm 0-30 psi/bar
2" IDF/ISS	150mm 0-60 psi/bar



$\frac{1}{4:1}$



--170543-06
 1-1/2" IDF/ISS
 1/2" Gas AISI316



--170543-08
 2" IDF/ISS
 1/2" Gos AISI316

Note: Drawings are not to scale. All Dimensions are in mm.

EVO Instrumentation reserves all rights to make modification to the product.

EVO Instrumentation Ltd, 31a Coppice Trading Estate,
 Off Stourport Road, Kidderminster, Worcs, DY11 7QY,
 Tel: 01562 741212 Fax: 01562 741666
 Email: sales@evoinstrumentation.co.uk
 Web: www.evoinstrumentation.co.uk
 Reg no: 1916635 England



Certificate No. FM 85396 003