

Chemical Diaphragm Seal

SEALEVOTRICLAMP



Tri Clamp Connection Diaphragm Seal

Applications:

- Diaphragm seals are designed to isolate the sensing element of pressure gauges and pressure switches from process fluids that may be corrosive, viscous, containing sediment and/or with high temperatures.
- The diaphragm is welded to the upper body, to ensure separation of filling fluid from the process medium.
- Faced Diaphragm position enables deep cleaning of the surface while the quick connection Clamp enables frequent removal from the process during sterilisation and cleaning operations.

Special features (Standard Version)

- All AISI 316 SS construction
- Available in 1 1/2" and 2" sizes

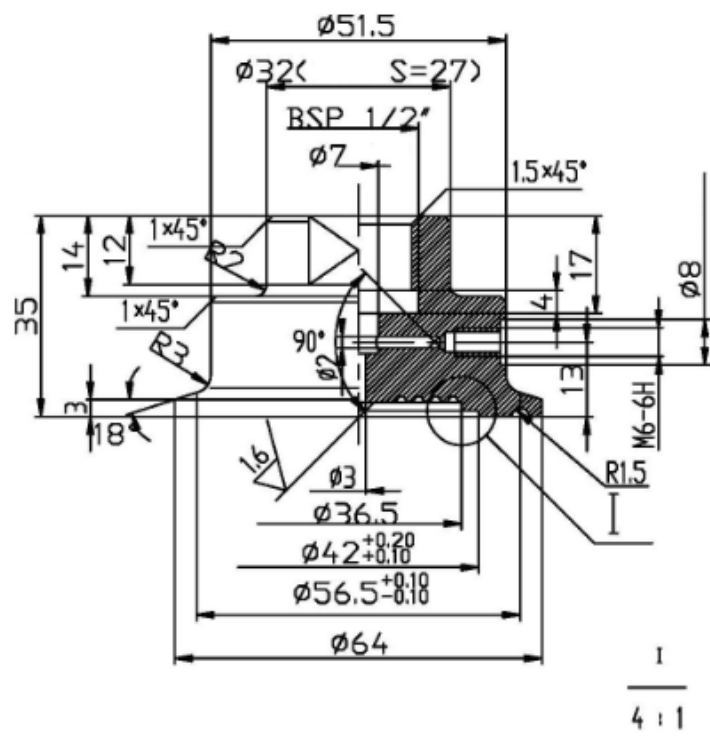
Specifications (Standard Version):

Working Pressure	From 15 PSI to 600 PSI
Process Temperature	-20°C to 120°C
Accuracy	0.5% for direct mounting
Instrument Connection Material	AISI 316 SS
Diaphragm Material	AISI 316L SS (welded)
Filling Liquid	Oil (FDA) for food industry
Process Connection Material	AISI 316 SS
Instrument Connection	1/2" BSP (Female)

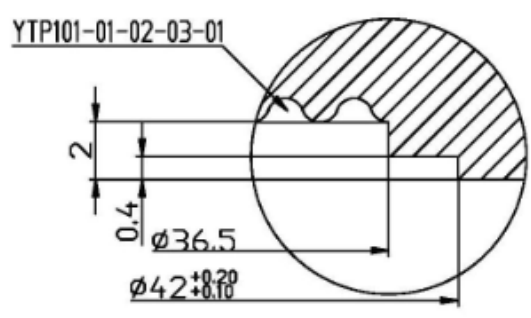
Ranges

Size of Seal	Dial Size
1/ 1/2"	63mm 0-60 – 0-600 psi/bar
1 1/2"	100mm 0-60 – 0- 600 psi/bar
1 1/2"	150mm 0-100 –0-600 psi/bar
2"	100mm 0-30 – 0-600 psi/bar
2"	150mm 0-30 – 0-600 psi/bar

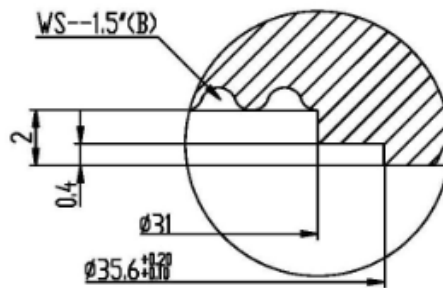
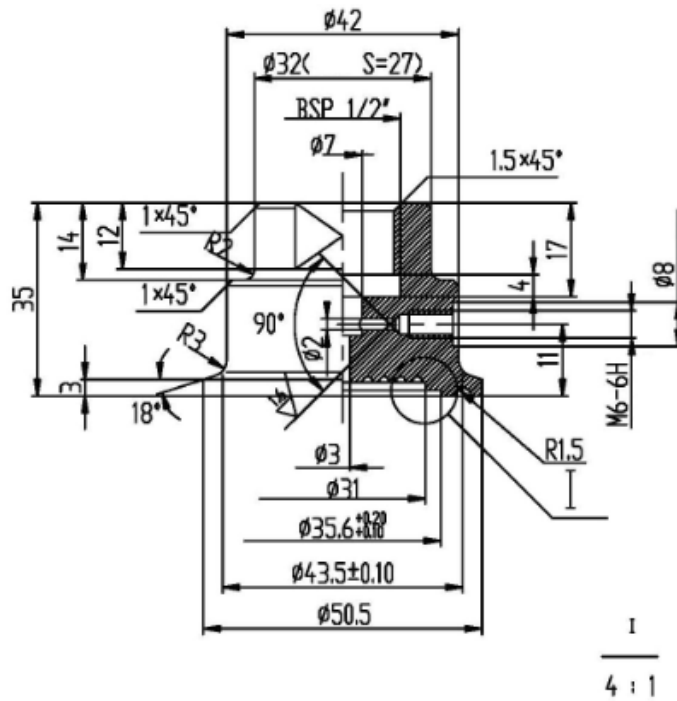
3.2/



I
4:1



3.2



Note: Drawings are not to scale. All Dimensions are in mm.

EVO Instrumentation reserves all rights to make modification to the product.

EVO Instrumentation Ltd, 31a Coppice Trading Estate,
Off Stourport Road, Kidderminster, Worcs, DY11 7QY,
Tel: 01562 741212 Fax: 01562 741666
Email: sales@evoinstrumentation.co.uk
Web: www.evoinstrumentation.co.uk
Reg no: 1916635 England

